

MONTHLY MEMBERSHIP PROGRESS REPORT

District 9 NE

Results as of: 11/30/2019

GMT:

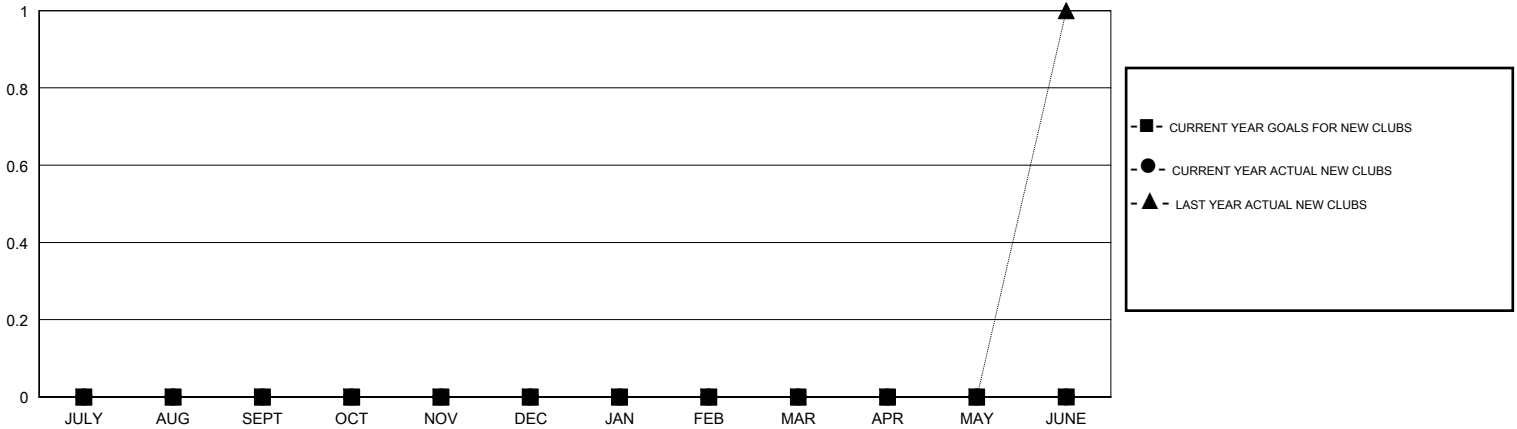
LOCATION IOWA

GMT CA

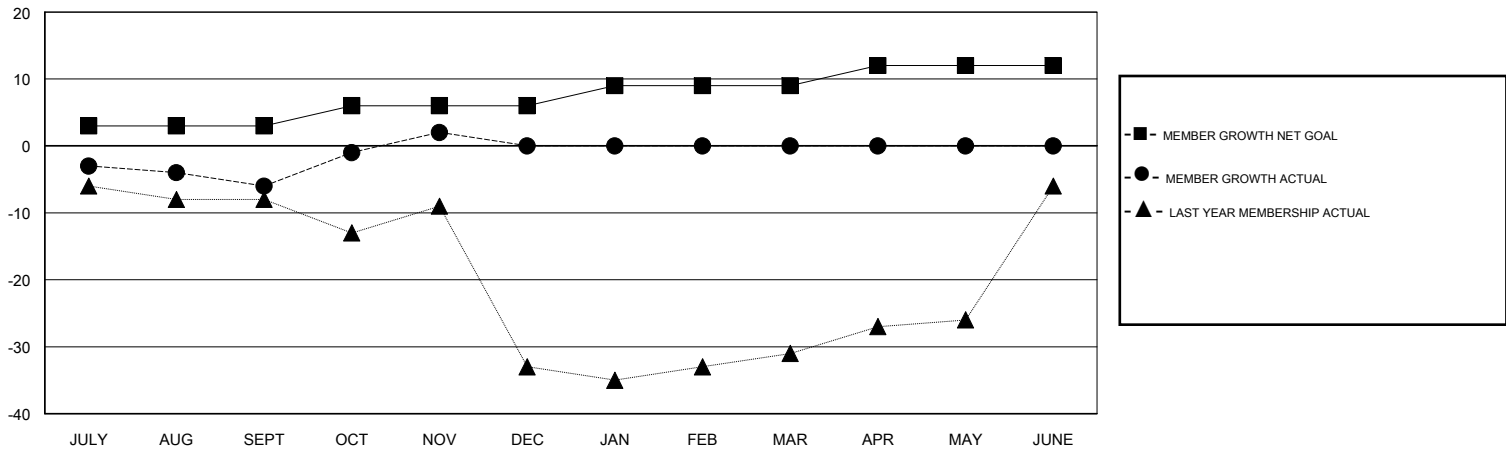
Clubs			
RESULTS FOR 2019-2020			
QUARTER	NEW CLUB GOAL	NEW CLUBS	DROPPED CLUBS
JULY/AUG/SEPT	0	0	0
OCT/NOV/DEC	0	0	0
JAN/FEB/MAR	0	0	0
APR/MAY/JUNE	0	0	0

Members			
RESULTS FOR 2019-2020			
QUARTER	MEMBER GROWTH NET GOAL	MEMBER GROWTH ACTUAL	DROPPED MEMBERS ACTUAL (including transfers)
JULY/AUG/SEPT	3	13	19
OCT/NOV/DEC	3	24	14
JAN/FEB/MAR	3	0	0
APR/MAY/JUNE	3	0	0

GOALS AND ACTUAL NEW CLUBS CUMULATIVE



GOALS AND ACTUAL MEMBERS CUMULATIVE



DROPPED CLUBS: 0	14 CLUBS OF 46 ADDED 1 OR MORE NEW MEMBERS	<u>GENDER DISTRIBUTION</u> MALE 1,076 (78.25%) FEMALE 299 (21.75%)
DROPPED MEMBERS DECEASED 2 CLUB CANCELLED 0 OTHER 31 TOTAL 33	CLICK HERE FOR CUMULATIVE MEMBERSHIP DATA	TOTAL FAMILY UNIT MEMBERS 164 FAMILY MEMBERS PAYING HALF DUES 83